



copyright © Oldtimer Garage
www.oldtimergarage.eu

Wiring diagram K750, MB750, MT12

" - " on body

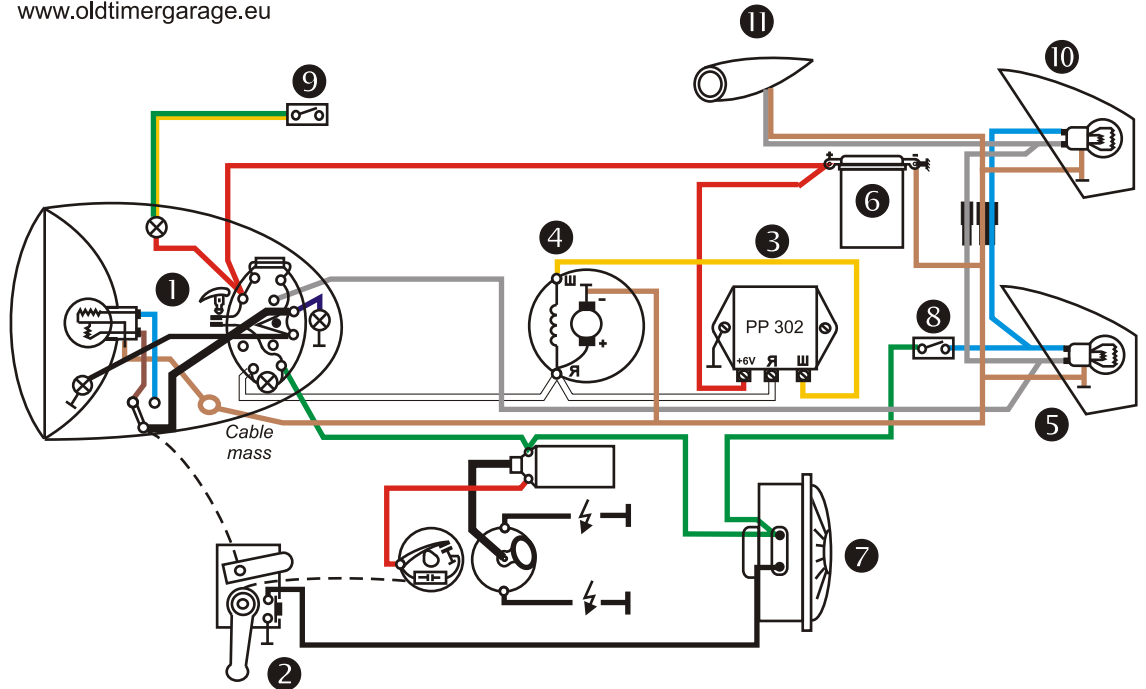


Fig. 1 with mechanical voltage regulator PP302,
designed to work with LED

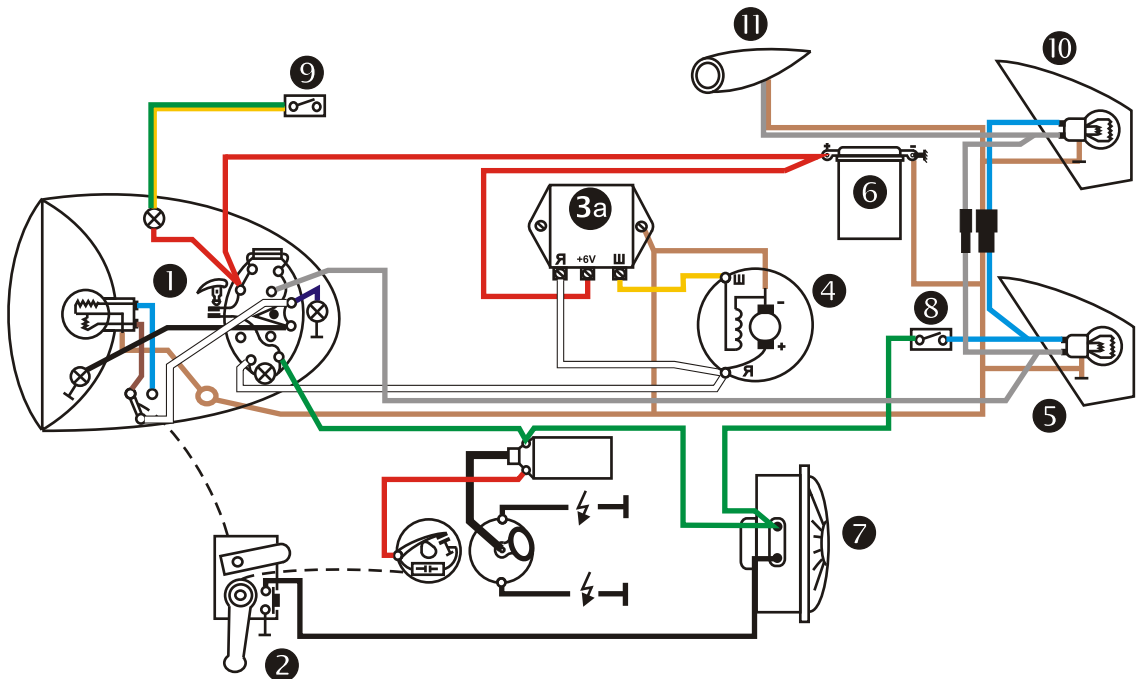
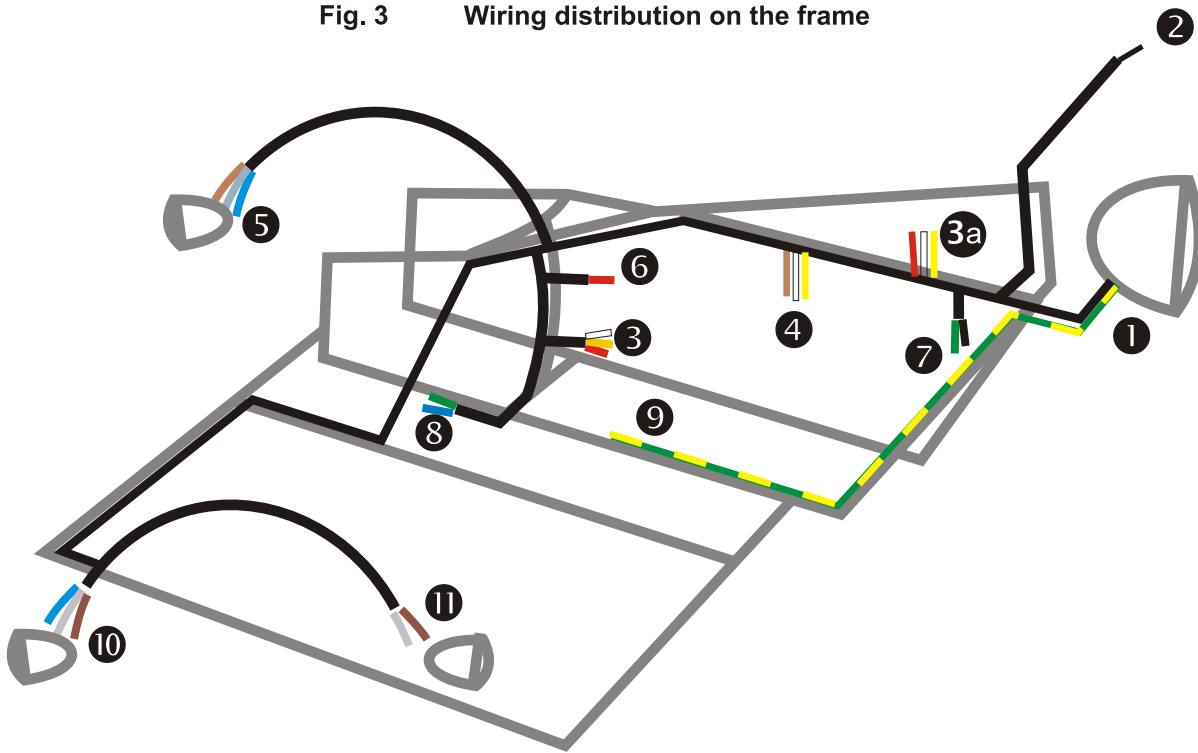


Fig. 2 with electronic voltage regulator,
designed to work with LED

Fig. 3 Wiring distribution on the frame

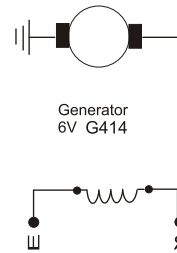


1. Headlamp
2. Light beam switch
3. Mechanical voltage regulator PP302
- 3a. Electronic voltage regulator (optional)
4. Generator 6V, typ G414
5. Rear Lamp
6. Battery
7. Horn
8. Switch, brake light
9. Switch, neutral control lamp (optional with MT801 gearbox)
10. Rear lamp, sidecar
11. Front lamp, sidecar

Additional photos at:
<http://www.oldtimergarage.eu/uk/help/5.html>

Picture 4 Necessary changes inside generator for use with electronic regulator

Original connections



After changes

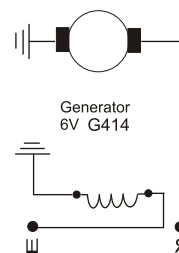


Fig. 5 Ignition switch diagram

